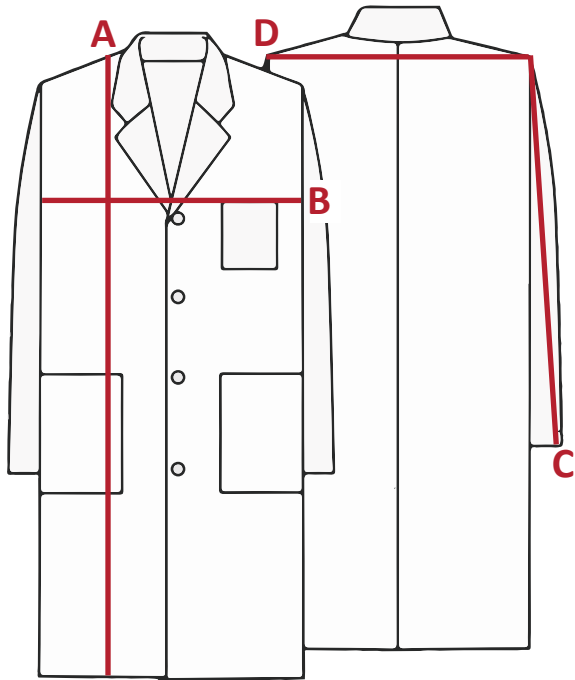


Lab Coat Size Guide



Add 2-4 inches to your chest circumference measurement (B) to account for clothing

Relaxed, Cuffed Sleeve, & Fire-Resistant Blue Size Guide

Size	Length A	Circumference B	Length C	Length D
XS	40.5	39	22.5	16.5
S	42	42	23	17
M	42	46	23	19
L	44	47	24	19
XL	44.5	48	24.5	20
XXL	45	49	25.5	20
3XL	46	51	26	21
4XL	47	53	26.5	21.5
5XL	47	66	26.5	25

TIPS: RELAXED, CUFFED, & FIRE-RESISTANT STYLES

- Looser fit
- Arm length is longer than fitted style
- Straight fit through waist and hips
- Typically runs one size larger than fitted style
 - *i.e. someone who wears a fitted medium would wear a small relaxed or cuffed*

TIPS: LONG/TALL Sizes (RELAXED)

- Relaxed fit (see above); good choice for people 6'2" (190 cm) or taller
- Arm lengths range from 26-27", coat lengths range from 46-47"
- White cotton/poly long/tall in chest sizes 36-54 (measurement B)

Fitted Size Guide

Size	Length A	Circumference B	Length C	Length D
XS	37	39	21.5	16
S	38	41	21.5	17
M	38.5	44	22	17
L	39	47	22.5	18.5
XL	40	52	22.5	19.5
XXL	41	55	22.5	20
3XL	42	59	22.5	21
4XL	42.5	63	22.5	22.5

TIPS: FITTED STYLE

- More form-fitting
- Arm length is shorter than relaxed style
- Adjustable waist belt at back
- Waist is slightly more narrow than hips and shoulders
- Typically runs one size smaller than relaxed styles
 - *i.e. someone who wears a relaxed medium would wear a fitted large*

Questions?

email
labcoats@umass.edu
 or visit the Lab Coat webpage →

